

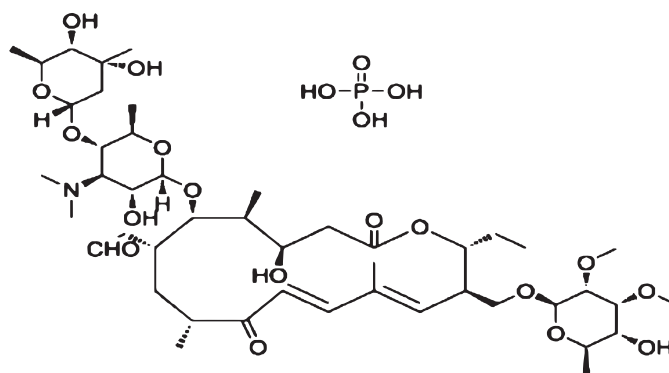
# **ROSS TILO<sup>®</sup>**

**Tylosin Phosphate 10% (HPLC)**



First Choice For  
Mycoplasma Control

Ross Tilo® (Tylosin Phosphate 10%) is a powerful antibiotic used in the treatment of Mycoplasmosis and bacterial diseases in poultry. This medication belongs to the macrolide class of antibiotics and is specifically designed to target and eliminate harmful bacteria. Its targeted action against Mycoplasma spp and bacteriostatic effect against other bacterial species makes it an effective treatment for a range of diseases. With its proven efficacy and safety record, Ross Tilo® is a reliable choice for maintaining the health and well-being of birds.



### Structure & Activity

Ross Tilo® is an antibiotic belonging to the macrolide class. It has a specific targeted action against Mycoplasma spp and also exhibits a bacteriostatic effect against Staphylococcus spp., Streptococcus spp., Campylobacter spp., E.coli spp., etc. It is primarily used for Chronic Respiratory Disease (CRD) like Mycoplasmosis and other gastrointestinal diseases.

Ross Tilo® consists of a mixture of four macrolide antibiotics (Tylosin A, B, C & D), with Tylosin factor A being the major and predominant fraction (>80%), along with small amounts of three minor factors: desmycosin (factor B), macrocin (factor C), and relomycin (factor D). All four components contribute to the potency of Tylosin, with Tylosin factor A having the highest microbiological potency.

### Composition

Each kg of Ross Tilo® contains

Tylosin Phosphate (Testing Method - HPLC) 100 gm

### Mechanism of Action

Ross Tilo® a macrolide antibiotic, exerts its bacteriostatic action by reversibly binding to the 23S rRNA within the 50S subunit of the bacterial ribosome. This binding inhibits the translocation of peptidyl-tRNA from the A site to the P site. As a result, mRNA-directed protein synthesis of susceptible pathogens is effectively inhibited.

### Benefits

- Tylosin Phosphate specifically targets the bacteria causing mycoplasmosis and bacterial diseases, effectively controlling their growth and spread within the poultry flock.
- With its quick onset of action, Tylosin Phosphate provides rapid relief from the symptoms associated with mycoplasmosis and bacterial infections, allowing your poultry to recover faster.
- By effectively managing these diseases, Tylosin Phosphate promotes improved health, enhanced growth, and increased egg production, resulting in better overall productivity in your poultry operation.

### Inclusion Levels

#### Prevention:

500-1000 ppm for prevention of Chronic Respiratory Disease in Chicken and Infectious Sinusitis in Turkeys

#### In case of Severe Infection:

1000 ppm daily for 3-7 days

#### Stress Condition:

500 ppm daily for 5-10 days during stressful conditions like vaccination, transportation, overcrowding, re-housing or abrupt changes in feed or environment.

\* Or As Recommended By Veterinarian