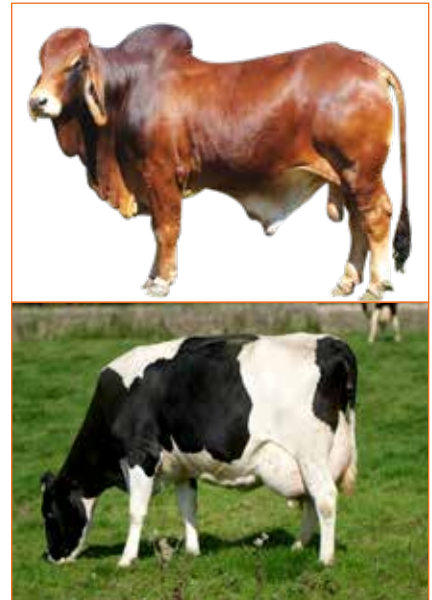


# Cal P-in

Animal Feed Supplement

## Composition: Each 20ml contains

Composition	Amount	Unit
Calcium	480.80	mg
Phosphorus	167.70	mg
Cobalt	25.00	mg
Manganese	10.00	mg
Copper	2.00	mg
Vitamin A	800.00	I.U.
Vitamin D <sub>3</sub>	1600.00	I.U.
Vitamin B <sub>12</sub>	20.00	mcg
Vitamin E	100.00	mg
Vitamin C	100.00	mg
N-Lysine	20.00	mg
N-Methionine	20.00	mg



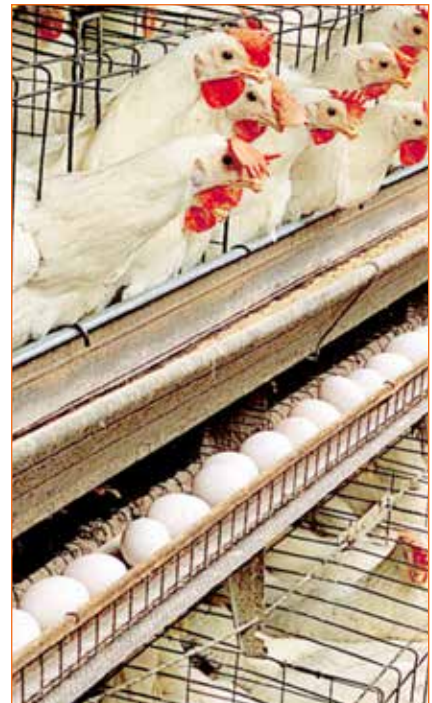
## Physical Properties: Liquid

### Indications :

- Cal P - in helps in formation of strong bones in growing animals
- Cal P - in fulfills Calcium deficiency
- Cal P - in improves milk yield in cattle
- Cal P - in improves egg production
- Cal P - in helps in formation of strong eggshell
- Cal P - in helps in formation of strong leg in broiler
- Keeps free from bad effects of free radicals
- Enhances body resistance against diseases of animal

### Dosages:

Species	Amount (daily)
Chicks/Broiler	20ml/100 poultry
Grower	50ml/100 poultry
Layer/Breeder	100ml/100 poultry
Cattle/Horse	100ml
Calf	20ml twice daily



<b>Side effects</b>	: No Side effects
<b>Toxicity</b>	: No toxicity
<b>Withdrawal period</b>	: Milk, Meat & Egg–Nil
<b>Precaution</b>	: Not Applicable
<b>Pack size</b>	: 1 Lit. & 5 Lit.
<b>Storage</b>	: Store in a cool and dry place
<b>Shelf life</b>	: Three years
<b>Country Of origin</b>	: India

Manufactured by

**ROSSARI**  
making you more competitive

**Rossari Biotech Ltd.**  
201-A & B, Akruti Corporate Park  
Lal Bahadur Shastri Marg  
Kanjurmarg (W), Mumbai 400078  
Email : info@rossarimail.com